

# Sensitive Melting Analysis after Real Time - Methylation Specific PCR (SMART-MSP): high-throughput and probe-free quantitative DNA methylation detection

Lasse S. Kristensen<sup>1,2</sup>, Thomas Mikeska<sup>1</sup>, Michael Krypuy<sup>1</sup> and Alexander Dobrovic<sup>1,3,\*</sup>

<sup>1</sup>Molecular Pathology Research and Development Laboratory, Department of Pathology, Peter MacCallum Cancer Centre, Locked Bag 1 A'Beckett Street, Melbourne, Victoria 8006, Australia, <sup>2</sup>Institute of Human Genetics, University of Aarhus, The Bartholin Building, DK-8000 Aarhus C, Denmark and <sup>3</sup>Department of Pathology, University of Melbourne, Parkville, Victoria 3010, Australia

Received December 19, 2007; Revised January 24, 2008; Accepted February 19, 2008

## ABSTRACT

DNA methylation changes that are recurrent in cancer have generated great interest as potential biomarkers for the early detection and monitoring of cancer. In such situations, essential information is missed if the methylation detection is purely qualitative. We describe a new probe-free quantitative methylation-specific PCR (MSP) assay that incorporates evaluation of the amplicon by high-resolution melting (HRM) analysis. Depending on amplicon design, different types of information can be obtained from the HRM analysis. Much of this information cannot be obtained by electrophoretic analysis. In particular, identification of false positives due to incomplete bisulphite conversion or false priming is possible. Heterogeneous methylation can also be distinguished from homogeneous methylation. As proof of principle, we have developed assays for the promoter regions of the *CDH1*, *DAPK1*, *CDKN2A* (*p16<sup>INK4a</sup>*) and *RARB* genes. We show that highly accurate quantification is possible in the range from 100% to 0.1% methylated template when 25 ng of bisulphite-modified DNA is used as a template for PCR. We have named this new approach to quantitative methylation detection, Sensitive Melting Analysis after Real Time (SMART)-MSP.

## INTRODUCTION

In mammalian cells, DNA methylation occurs almost exclusively at the carbon-5 position of cytosine residues

within CpG dinucleotides. The CpG dinucleotide is distributed in a non-random fashion throughout the human genome. CpG-depleted regions are interspersed with CpG-rich sequences referred to as CpG islands (1). These islands are often located at promoter regions of protein encoding genes and tend to be unmethylated (2,3).

Aberrant DNA methylation patterns are one of the hallmarks of cancer. In most cancers, promoter hypermethylation correlates with gene silencing. This has been shown for a wide range of tumour suppressor genes including the genes studied here and reviewed in (2,3): the cell-cycle inhibitor gene *CDKN2A* (*p16<sup>INK4a</sup>*), the proapoptotic death-associated protein kinase gene *DAPK1*, the cell-adhesion gene *CDH1* and the retinoic acid receptor gene *RARB*.

In cancer, methylation of some promoter CpG islands can be an early event, and thus the detection of methylation shows great promise as a biomarker for early detection (4–6). Conventional methods for cancer detection are in general not capable of finding pre-neoplastic and small malignant lesions, and are thus not suitable for early detection. Molecular biomarkers in body fluids such as blood, sputum or urine that allow detection and diagnosis of tumours at an early stage would be ideal. However, in these types of samples, tumour-derived material is hard to detect because of the presence of material from normal cells, and thus highly sensitive methods are needed (7). As one example, methylation of the *CDKN2A* promoter has been detected in the sputum of smokers up to 3 years before they are diagnosed with cancer (8). Detection of low level methylation also shows great potential in the molecular monitoring of established disease after therapy (4). This has already been shown to be feasible in various cancers using DNA derived from plasma or serum (9,10).

\*To whom correspondence should be addressed. Tel: +61 3 9656 1807; Fax: +61 3 9656 1460; Email: alexander.dobrovic@petermac.org

Methylation-specific PCR (MSP) (11) is a highly sensitive method for the detection of low level methylation, and can be sensitive to at least 0.1% methylated template. However, MSP is prone to false-positive results (12–14). MSP primers are normally designed to have one or more cytosines of CpG sites at or near the 3' end. This makes the primers highly selective for methylated template, but also facilitates amplification of incompletely converted sequences in the bisulphite-treated DNA (13). It is thought that bisulphite treatment, in spite of recent improvements in this area, still remains the main source of variability in the analysis of DNA methylation. Recent results show that incomplete conversion may typically be in the order of 2%, even when a commercial kit is used (15,16). This variability can not only lead to false-positive results, but can also impair quantitative assays in a way that leads to overestimation of methylation levels (17), especially when looking at low level methylation.

Different methods for the detection of incompletely converted products co-amplified during the PCR have been proposed (14,16,18). These methods are relatively labour intensive and require removal of the PCR product from the tube for further analysis creating the potential for PCR contamination, or the use of additional probes as in the ConLight-MSP methodology (14).

MSP has been made quantitative by the use of fluorescent TaqMan probes enabling real time detection of MSP products (such as in the MethyLight technique) (19–21). This also eliminates any signal from non-specific amplification. However, the introduction of a probe complicates assay design, and can result in heterogeneously methylated sequences that would otherwise be detected by MSP being missed, because of the need for the probe to hybridize correctly before a signal is observed.

Here we present a new method: Sensitive Melting Analysis after Real Time (SMART)-MSP for sensitive DNA methylation detection based on probe-free real-time PCR. With the use of a new generation of fluorescent dyes, which do not inhibit PCR when they intercalate into double-stranded DNA at saturating levels (22), highly accurate quantification and further analysis of the amplicon by high-resolution melting (HRM), has become possible. As the temperature increases during the HRM step, and the DNA 'melts', the dye is released and the signal of fluorescence decreases rapidly. This change in fluorescence is sequence specific and can be monitored by appropriately designed instrumentation.

SMART-MSP provides information that cannot be obtained by electrophoresis, and thus functions as a quality control to avoid false-positive results caused by incomplete conversion or false priming due to less stringent PCR conditions. Primer dimers and non-specific products can be detected as well.

We developed SMART-MSP assays for several tumour suppressor genes that are currently used as molecular biomarkers for early cancer detection or are likely to have a high potential as such. The quantitative accuracy of the assays was tested using a standard dilution series of methylated DNA into unmethylated DNA. Furthermore, we show that false-positive results due to incomplete bisulphite conversion or false priming can be identified by

HRM analysis and we have analysed a panel of cell lines, and breast cancer samples by the SMART-MSP methodology.

## MATERIALS AND METHODS

### Samples and DNA extraction

The investigations were performed after approval by the Peter MacCallum Cancer Centre Ethics of Human Research committee (Projects 02/70 and 02/26). Purified genomic DNA from cell lines (2008, MCF7, HS578T, MCF10A, MDA-MB-468, MDA-MB-231, MDA-MB-435, PC3, SKBr-3, Colo205, RPMI8226, SW948, HL-60 and T47D) was available in our laboratory. The DNA was extracted using the QIAamp<sup>®</sup> DNA Blood Mini Kit (Qiagen, Hilden, Germany) according to the manufacturer's instructions. Breast cancer samples were provided by the Peter MacCallum Cancer Centre Tissue Bank. DNA from those samples was extracted using the salting out method (23). Universal Methylated DNA (Chemicon, Millipore, Billerica, MA, USA) was used as a fully methylated positive control. DNA from peripheral blood mononuclear cells from normal individuals was used as unmethylated DNA for dilutions. Standard dilution series of 100, 10, 1, 0.1 and 0.01% methylation levels were prepared by diluting the fully methylated DNA into the unmethylated DNA. DNA was quantified with a NanoDrop ND-1000 spectrophotometer (NanoDrop Technologies, Wilmington, DE, USA).

### Whole-genome amplification

Whole-genome amplification (WGA) was performed as described by Umetani *et al.* (24) with slight modifications. Briefly, for primary WGA, 1 ng of genomic DNA extracted from peripheral blood mononuclear cells in 1 µl was subjected to amplification (2 h at 30°C) with the Illustra GenomiPhi V2 DNA Amplification Kit (GE Healthcare, Little Chalfont, UK) according to the manufacturer's instructions. For secondary WGA, 0.1 µl of the unpurified primary WGA product was diluted in water to a final volume of 1 µl and processed as described above. The secondary WGA product was purified using the QIAquick<sup>®</sup> PCR Purification Kit (Qiagen) according to the manufacturer's instructions, eluted in 50 µl buffer EB, and quantified with a NanoDrop ND-1000 spectrophotometer. The secondary WGA product was used as fully unmethylated DNA (negative control).

### Bisulphite modification

Five hundred nanograms of genomic DNA or WGA product was subjected to bisulphite conversion with the EpiTect<sup>®</sup> Bisulfite kit (Qiagen) according to the manufacturer's instructions. The purified, bisulphite-modified DNA (WGA product) was eluted two times in 20 µl buffer EB. Incomplete bisulphite-modified DNA was prepared by treating the appropriate samples for 20 or 40 min with the bisulphite mix solution and purified as described earlier.

**Table 1.** Primer sequences, annealing temperatures, and amplicon information for the SMART-MSP assays (UCSC Genome Browser, November 2007)

Gene	Primer sequences (CpG sites in bold and converted Cs as capital Ts or As)	Annealing temperature (°C)	Amplicon size (bp)	CpGs/non-CpG-Cs between the primers	Spanned region
<i>CDHI</i>	F-gtggg <b>cg</b> ggT <b>cg</b> tTagTtTc R- <b>cg</b> ctAattAActAaAAAAttcacct <b>Accg</b>	64	86	2/8	67328555-67328640 of Chr. 16
<i>DAPK1</i>	F-aggaTagT <b>cg</b> gaT <b>cg</b> agTT <b>aa</b> cgTc R-tt <b>Accg</b> aAtcccct <b>cg</b> gA	67	61	0/4	89302618-89302678 of Chr. 9
<i>CDKN2A</i>	F-gTaTTT <b>tc</b> gagTaT <b>tc</b> gTtT <b>aa</b> cgge R-caaatcctctAAaAAA <b>accg</b> gA	63	72	0/6	21964971-21965042 of Chr. 9
<i>RARB</i>	F-T <b>cg</b> aga <b>ac</b> g <b>cg</b> ag <b>cg</b> atTc R-g <b>Acc</b> aatcca <b>Accg</b> AAA <b>cg</b>	63	146	5/18	25444864-25445008 of Chr. 3
<i>COL2A1</i>	F-gTaatgTT <b>agg</b> gTaTTT <b>tg</b> ggTa R-ctacc <b>cc</b> aAAaA <b>acc</b> aAtc <b>ct</b> A	65	86	0/1	46667210-46667295 of Chr. 12

### SMART-MSP primer design

The primers were designed to include at least two CpG sites, and one of the cytosines of a CpG site was always placed at or adjacent to the 3' end. This will make the primers as selective for methylated templates as possible, and ensure that only these are amplified during PCR if sufficiently stringent conditions are chosen. Non-CpG cytosines were included in the primer sequences as well to select against incompletely converted sequences, and at least one of these was placed as close to the 3' end as possible. Primer Express 1.5 (Applied Biosystems, Foster City, CA, USA) was used to calculate the estimated annealing temperature of the primers. Amplicons were designed to have only one melting domain according to the POLAND software (<http://www.biophys.uni-duesseldorf.de/local/POLAND/poland.html>) (25). The program Amplify (<http://engels.genetics.wisc.edu/amplify/>) was used to check for primer dimers, and no single nucleotide polymorphisms (SNPs) were found in any of the designed amplicons using BLAST searching of the SNP database (dbSNP BUILD 127). This is important since SNPs will interfere with the melting profile (if found in between primers) or possibly affect primer binding. The primer sequences and genomic regions spanned, as well as amplicon size and the annealing temperatures ( $T_A$ ) can be found in Table 1.

### PCR and HRM conditions for the SMART-MSP assays

PCR cycling and HRM analysis were performed on the Rotor-Gene 6000<sup>TM</sup> (Corbett Research, Mortlake, Australia). SYTO<sup>®</sup> 9 was used as the intercalating dye (Invitrogen, Carlsbad, CA, USA). The reaction mixtures consisted of 25 ng of bisulphite-modified template (theoretical amount), 1x PCR buffer, 2.5 mmol/l MgCl<sub>2</sub> final (3 mmol/l in the *CDHI* assay), 200 nmol/l of each primer, 200 μmol/l of each dNTP, 5 μmol/l of SYTO 9, 0.5 U of HotStarTaq (Qiagen) (5 U/μl) in a final volume of 20 μl. The cycling protocol started with one cycle of 95°C for 15 min for enzyme activation, followed by 45 cycles of 95°C for 20 s, annealing at the appropriate temperature (Table 1) for 30 s, 72°C for 30 s and one cycle of 95°C for 1 min. HRM was performed from 60°C to 90°C, with a temperature increase at the rate of 0.2°C/s for all assays.

The annealing temperature was experimentally determined for each assay to ensure that only methylated templates were amplified. For each assay, a standard dilution series was run to assess the quantitative properties and sensitivity of these. Fully methylated and fully unmethylated control (WGA product), unmodified control and no template control were also included in every run. All samples were analysed in triplicate and each breast tumour sample in duplicate.

### Gel electrophoresis analysis




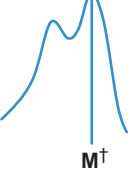




Five microlitres of the PCR products were resolved on 2.5% agarose gels and stained with ethidium bromide.

### The *CDHI* and *RARB* MethyLight assays

The same primers were used for the MethyLight assays as for the SMART-MSP assays. The probe sequences were FAM-5'-ttcgcgttggtgattgg-3'-BHQ for *CDHI* and FAM-5'-ttgggtatcgtcgggta-3'-BHQ for *RARB*. The reaction mixtures consisted of 25 ng of bisulphite-modified DNA (theoretical amount), 1x PCR buffer, 250 nmol/l of probe, 3 mmol/l MgCl<sub>2</sub>, 200 nmol/l of each primer, 200 μmol/l of each dNTP, and 0.5 U of HotStarTaq (Qiagen) (5 U/μl) in a total volume of 20 μl. The cycling protocol started with one cycle of 95°C for 15 min, followed by 45 cycles of 95°C for 20 s and 63°C (64°C in the *CDHI* assay) for 40 s. PCR cycling was performed on the Rotor-Gene 6000. All samples were analysed in triplicate and each breast tumour sample in duplicate.

### Real time PCR quantification

The relative  $2^{(-\Delta\Delta C_T)}$  quantification approach (26) was used. The cycle threshold ( $C_T$ ) value of the control *COL2A1* assay (Table 1) is subtracted from the  $C_T$  value of the target gene for the calibrator sample, the 100% methylated standard. For each test sample, this value is then subtracted from the value resulting from the  $C_T$  value of the target gene minus the  $C_T$  value for the *COL2A1* control assay. This gives the ' $\Delta\Delta C_T$ ' value, which is then put in to the equation,  $2^{(-\Delta\Delta C_T)}$ , and multiplied by 100 to give the percentage of methylation relative to the 100% methylated control. For this approach to be valid, the amplification efficiencies of the gene and the control must

	Region in between primers				Comments
	Non-CpG cytosines		CpG (and non-CpG) cytosines		
	Melting profile (theoretical)	Amplification	Melting profile (theoretical)	Amplification	
<b>Full methylation</b>		Early *		Early *	* Fully methylated template will amplify early relative to a heterogeneously methylated template. However, late amplification is observed when the percentage of fully methylated template is low.
<b>Heterogeneous methylation</b>		Intermediate to late		Intermediate to late	† In this situation, a complex melting pattern composed of heteroduplexes as well as homoduplexes will generally occur. The more CpGs in between the primers, the more complex the pattern.
<b>Unmethylated (false priming)</b>		Very late		Very late	‡ A single left-shifted melting peak is an indication that all the CpGs in between the primers were unmethylated, and thus amplification may be a result of false priming.
<b>Incomplete conversion</b>		Late		Late	§ If non-CpG cytosines are included a right-shifted melting profile may be observed, dependent on the methylation status of the CpG cytosines in between the primers. This can be complex to interpret.

**Figure 1.** A schematic overview of SMART-MSP. Bisulphite-modified DNA is amplified in real time using a HRM-compatible intercalating dye to obtain quantitative data. After real-time PCR a HRM step is performed for quality control of the amplicon. The interpretation is made by considering both the real-time PCR and the HRM information. Two different types of SMART-MSP amplicon design are shown here, in combination with the melting profiles and amplification data that can be expected (vertical rows), in different methylation and conversion situations (horizontal rows). Incomplete conversion can be detected most readily when non-CpG cytosines are found in between the primers and no CpG cytosines are found. By including CpG cytosines in between the primers, it can be determined if the region is heterogeneously methylated or unmethylated. If the CpG cytosines in between the primers are unmethylated, the amplification might be a result of false priming. *N* and *M* are theoretical temperatures dependent on the amplicon size and sequence.

be approximately equal (26). The take-off values given by comparative quantification (a feature of the Rotor-Gene 6000 Series Software, version 1.7.61) were used as  $C_T$  values in the calculations. The take-off point is defined as the cycle at which the second derivative is at 20% of the maximum level, which indicates the end of the background noise and the transition into the exponential phase.

## RESULTS

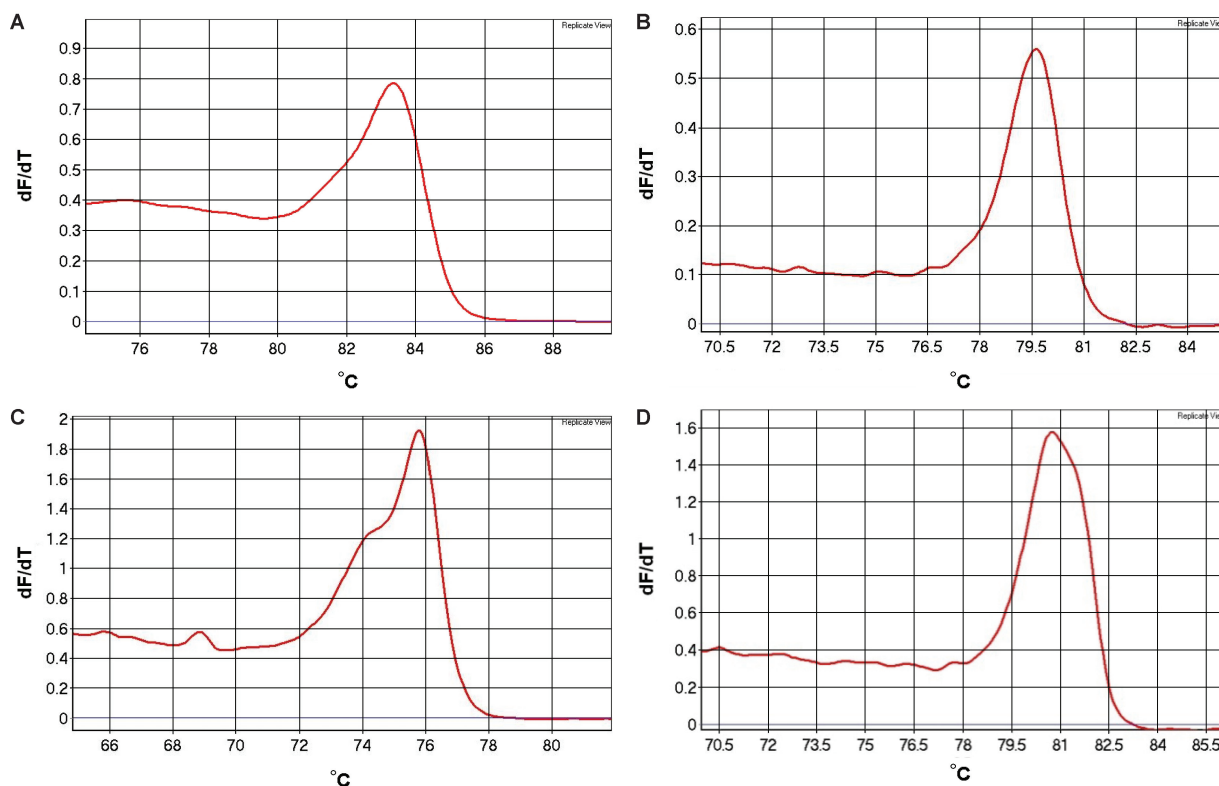
### The basis of SMART-MSP

Real-time amplification of bisulphite-converted DNA with MSP primers is performed with a fluorescent dye, which does not inhibit the PCR when used at saturating conditions (22). This allows for highly accurate

quantitative results to be obtained without the use of probes and for HRM analysis to be performed. Quantification is based on  $C_T$  values, and thus it is necessary to run a control assay in parallel to normalize for the amount of input DNA in the PCR. We designed a new *COL2A1* control assay to estimate the amount of amplifiable template (Table 1), adjacent to the region used previously as an input control in MethyLight-based assays (27). The region we chose has improved selection against the amplification of unconverted DNA (data not shown).

In the SMART-MSP methodology, sensitive melting analysis using HRM is performed immediately after the real-time PCR in a closed-tube system. The kind of information that can be obtained from HRM is dependent on amplicon design, and should be interpreted by considering the amplification data as well (Figure 1). First, when only non-CpG cytosines are included in





**Figure 2.** Melting profiles of a true positive result for each SMART-MSP assay. Universally methylated template was amplified and analysed by HRM analysis. Each assay has a characteristic melting profile. (A) The *CDHI* assay. (B) The *DAPK1* assay. (C) The *CDKN2A* assay. (D) The *RARB* assay.

between the primers, the HRM step can function as a control for amplification of incompletely converted DNA. If incomplete converted sequences are amplified, the amplicon will have a higher GC-content relative to fully converted amplicons, and will therefore melt later. We designed the *DAPK1* and *CDKN2A* assays in this way.

Second, when CpG sites are included between the primers, the HRM step can be used to assess if these CpG sites are methylated. We designed the *CDHI* and *RARB* assays in this way. Generally, if left-shifted melting is observed, this is an indicator that some or all of the CpG sites are not methylated. A complex melting pattern consisting of heteroduplexes as well as homoduplexes can occur if more than one molecule is amplified during the PCR and the studied region is heterogeneously methylated. Thus, a heterogeneously methylated region can give a melting profile extending to the left, due to the melting of molecules with different CpG positions being methylated and heteroduplex formation between them (Figure 1). Left shifting can also indicate false positives due to false priming. In this case, a single left-shifted peak will be seen. Generally, false priming is associated with very late amplification (Figure 1). False priming can generally be minimized by stringent PCR conditions. Assays should be designed to include as few non-CpG cytosines as possible, preferably none. A conversion control should be performed in parallel when non-CpG cytosines cannot be avoided to be confident that these are converted. Our *CDHI* and *RARB* primers were designed so that they can

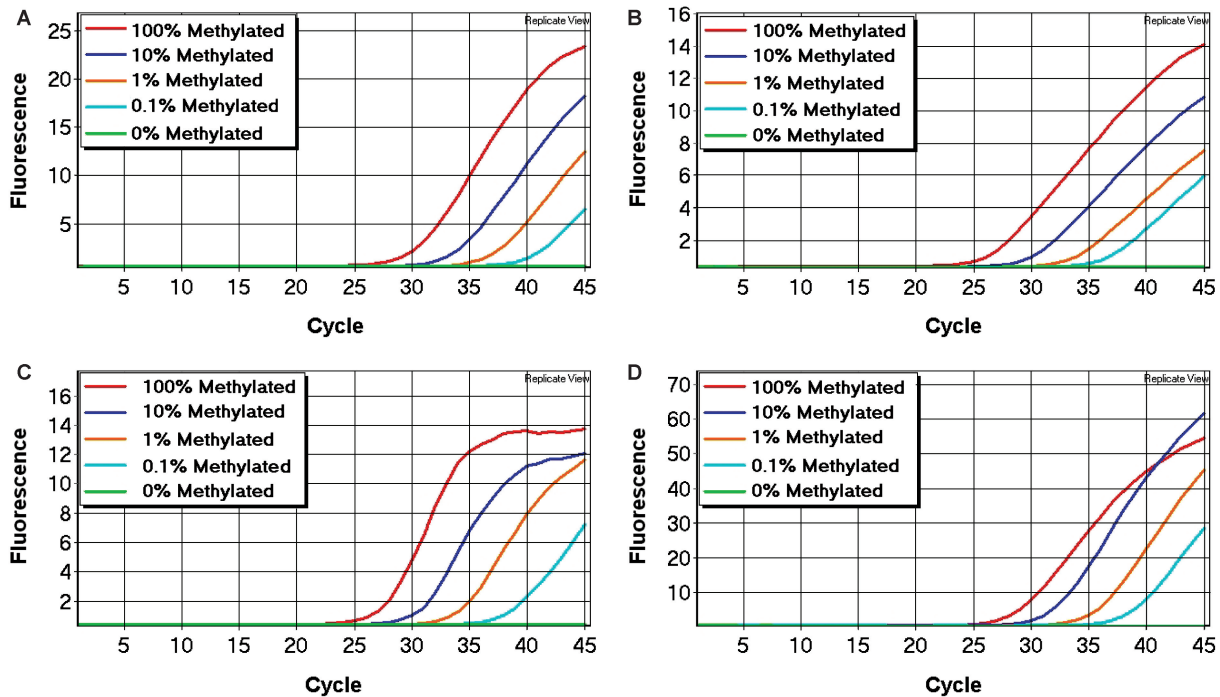
also be used with a MethyLight probe for validation of the SMART-MSP methodology. Because of this, more non-CpG cytosines are found in between the primers than what would be ideally preferred. Generally, longer products give more intrinsic variation of the melting curves (unpublished results).

Third, small amplicons can be designed that do not include non-CpG cytosines or CpG sites. In this case, only the methylation status of those CpG sites found under the primers are assessed, and the HRM step is used only then to validate that the correct sequence is amplified.

In all the above cases, the presence of primer dimers and non-specific products can be identified on the basis of aberrant melting profiles by HRM analysis (data not shown) without the need for gel electrophoresis.

### Melting profiles of the SMART-MSP assays

The melting profiles of a true positive result, obtained by amplifying standards containing methylated template for each assay, were used as references for unknown samples (Figure 2). Since all the amplified dilution standards for a given amplicon have the same melting profile, we could have chosen any one of them as a reference. The melting temperature of each assay was approximately 83.2°C for *CDHI*, 79.5°C for *DAPK1*, 75.8°C for *CDKN2A* and 80.8°C for *RARB*. Confirmatory gel electrophoresis was performed in the development phase for all assays, and only one band of the expected size was observed (data not shown).



**Figure 3.** The sensitivity of the SMART-MSP assays. In all assays, the 0.1% methylated standard could be detected with high reproducibility. (A) The *CDHI* assay. (B) The *DAPK1* assay. (C) The *CDKN2A* assay. (D) The *RARB* assay.

### Sensitivity and quantitative accuracy of the SMART-MSP assays

Each SMART-MSP assay was optimized so that amplification only occurred from standards containing methylated template, and no amplification was seen in the fully unmethylated control (WGA product), in the unmodified control or in the no template control. The sensitivity and quantitative accuracy of the assays were determined using the standard dilution series (see Materials and methods section). All our assays were able to reliably detect the 0.1% methylated standards (Figure 3).

The quantitative accuracy of each assay was determined using the relative  $2^{(-\Delta\Delta C_T)}$  quantification approach (see Materials and methods section). Amplification efficiencies of the gene and the control were approximately equal for all assays (data not shown). The calculated values for each standard were plotted versus the dilution factor for each gene (Figure 4).

All reactions contained approximately equal amounts of template suitable for PCR. This was evident from the similar  $C_T$  values obtained in the control assays (data not shown). We used the software to obtain a standard curve for the dilution series for calculation of the correlation coefficient ( $r^2$ ) for each assay. The correlation coefficient for each assay (*DAPK1*:  $r^2 = 0.995$ , *CDKN2A*:  $r^2 = 0.998$ , *CDHI*:  $r^2 = 0.999$ , *RARB*:  $r^2 = 0.995$ ) indicated a strong linear relationship between  $C_T$  values and given concentrations for all assays.

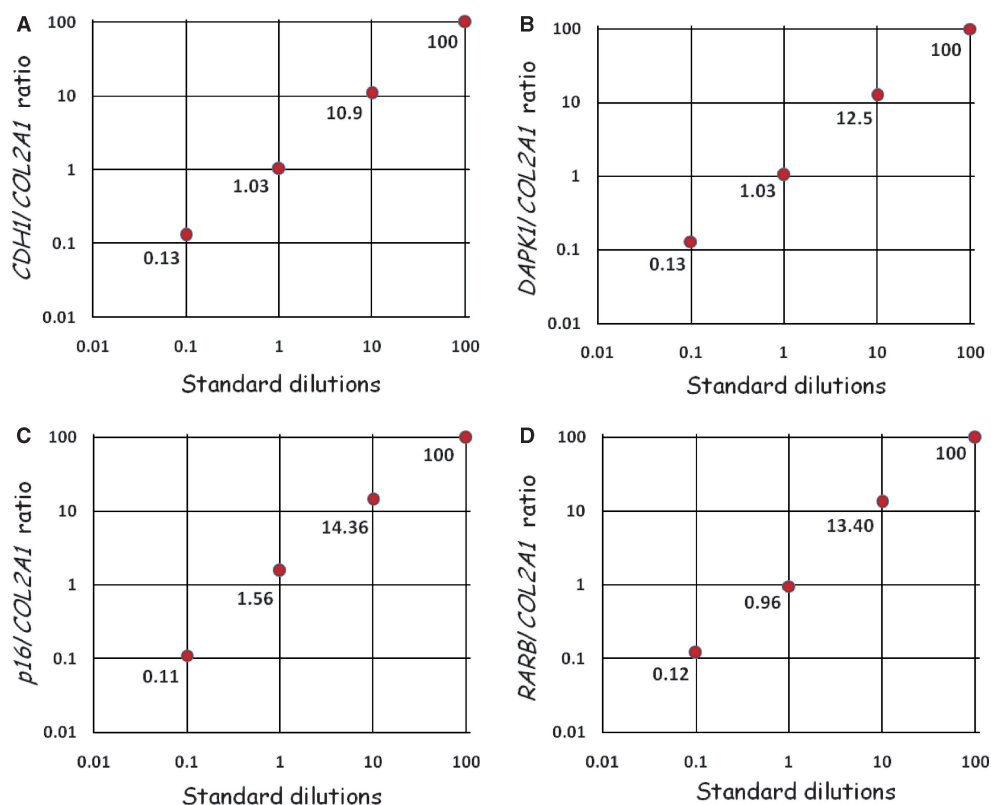
We also tested the *CDHI* and *RARB* MethyLight assays. These MethyLight assays were quantitatively accurate in the range from 100% down to 0.1% methylated template. The correlation coefficients of the

MethyLight assays were: *CDHI*:  $r^2 = 0.984$  and *RARB*:  $r^2 = 0.983$ , again indicating a strong linear relationship between  $C_T$  values and given concentrations for both.

### Validation of the *DAPK1* and *CDKN2A* SMART-MSP conversion control assays

Bisulphite conversion can be assessed by HRM analysis using assays with non-CpG cytosines between the primers. If a right shift of the melting profile is observed, this can only be due to incomplete conversion of some or all of the non-CpG cytosines in between the primers or amplification of non-specific products (Figure 1). Since incompletely converted products are of the same size as true positives, these cannot be distinguished using gel electrophoresis. We generated incompletely converted DNA (see Materials and methods section) to assess whether its amplification showed right-shifted melting profiles in these assays. Amplification was usually seen from these samples and always showed right-shifted melting profiles. As expected, the 100% methylated standard amplified earlier than incompletely converted DNA in both assays, and thus gave higher melting peaks (Figure 5).

We showed that bisulphite-modified template melts early relative to unmodified template (Figure 6). A primer pair (5'-gggaagatgggatagaaggaataT and 5'-tctAacaAttAAActccaaccaccaa) with a limited number of non-CpG cytosines in their sequences (shown in upper case), and thus not particularly discriminatory against unmodified sequences, was used to amplify bisulphite-modified as well as unmodified DNA from the same sample. In this assay, five non-CpG cytosines and no CpG sites are found in between the primers. Since the unmodified amplicon has a



**Figure 4.** The quantitative accuracy of the SMART-MSP assays. The quantitative accuracy of the SMART-MSP technology was assessed using the  $2^{(-\Delta\Delta C_T)}$  quantification approach. For each assay the calculated gene/control ratio for each standard is plotted against the dilution factor in a double logarithmic diagram. All assays proved to be quantitatively precise. (A) The *CDHI* assay. (B) The *DAPK1* assay. (C) The *CDKN2A* assay. (D) The *RARB* assay.

higher GC-content, it is more stable and melted later than the bisulphite-modified amplicon.

#### Identification of false positives in the *CDHI* SMART-MSP assay

By running the *CDHI* SMART-MSP assay for an additional 10 cycles, late amplification from the fully unmethylated control (WGA product) occurred. Since this WGA control is not methylated at the two CpG sites in between the primers, we expected to see a readily distinguishable left-shifted melting peak, and thus to be able to identify it as a false-positive result (Figure 1). The melting peak of the unmethylated control (WGA product) was shifted  $\sim 1.2^\circ\text{C}$  to the left compared to the standards containing methylated template (Figure 7).

#### Screening of cell lines

The reliability of our method was tested using a panel of 14 cell lines (2008, MCF7, HS578T, MCF10A, MDA-MB-468, MDA-MB-231, MDA-MB-435, PC3, SKBr-3, Colo205, RPMI8226, SW948, HL-60 and T47D) with the *CDHI* and *CDKN2A* SMART-MSP assays. Five of these cell lines were shown to be methylated at the *CDHI* promoter at various levels (HL-60: 100%, MDA-MB-435: 75%, PC3: 10%, HS578T: 6% and RPMI8226: 2%). The amplification data (Figure 8A) were used to calculate the methylation levels as described (see Materials and

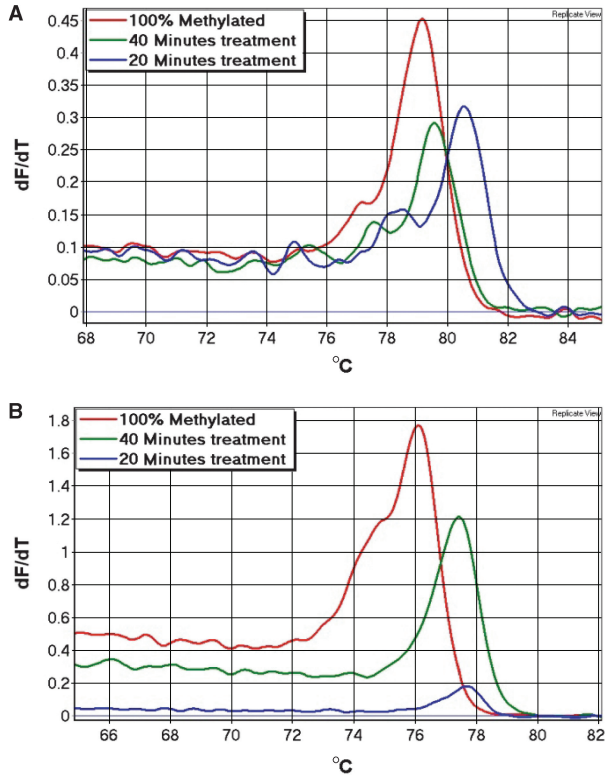
methods section). These results were validated using the *CDHI* MethyLight assay, in which the same five cell lines were shown to be methylated at similar levels (Figure 8B). Our results were consistent with previously published data on these cell lines (28,29).

However, the HS578T cell line was estimated to be methylated at lower levels when using the MethyLight assay relative to the SMART-MSP assay. This may be due to the fact that the probe in the MethyLight assay overlays two CpGs and that these are not consistently methylated in this cell line. The melting profiles obtained by the SMART-MSP assay was left-shifted, indicating that at least one of these two CpGs sites were unmethylated (data not shown).

Five of the 14 cell lines were shown to be methylated by SMART-MSP at various levels at the *CDKN2A* promoter (T47D: 65%, PC3: 35%, RPMI8226: 30%, Colo205: 1% and SW948: 0.1%). Again, these results were consistent with previously published data on these cell lines (28,30).

#### Screening of breast cancer samples

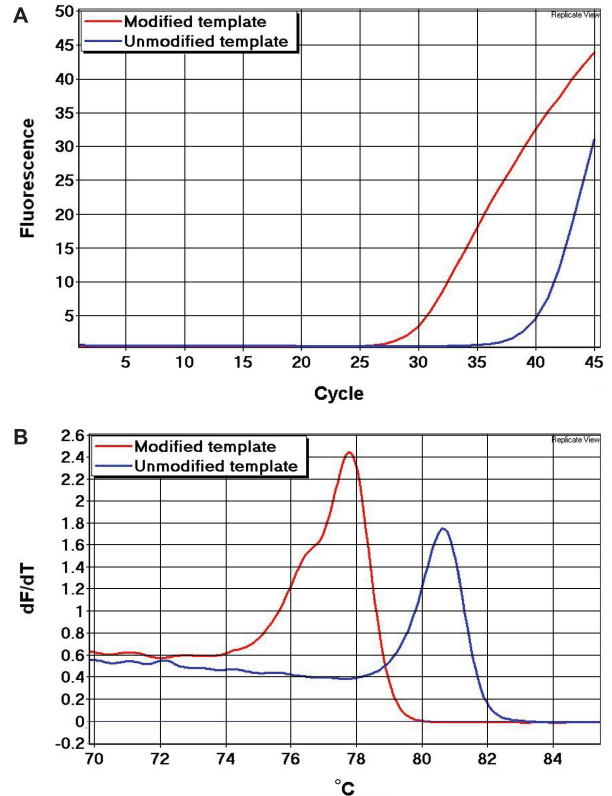
The diagnostic applicability of the SMART-MSP methodology was tested using the *RARB* and *CDHI* assays on a panel of 24 breast cancer samples. We found 6 out of the 24 samples to be methylated at the *RARB* promoter region at levels higher than 5% (76, 57, 44, 33, 29 and 7%). The amplification data (Figure 8C) were used to calculate the methylation levels. Data from the control assay is not



**Figure 5.** Validation of the conversion control in the *DAPK1* and *CDKN2A* assays. A peripheral blood control sample was bisulphite treated using different times of conversion (20 min, 40 min, normal protocol), and used to test the conversion control of these assays. (A) The *DAPK1* assay. A gradual right-shift of the melting peaks was observed as the treatment time decreases. The observed right-shift of the incompletely treated samples indicates that some of the non-CpG cytosines in between the primers were not converted. Thus, these samples could be identified as false positives. (B) The *CDKN2A* assay. The 40 min treated sample and the 20 min treated sample both showed right-shifted melting peaks. Again, indicating that some of non-CpG cytosines in between the primers were not converted, and thus these samples could also be identified as false positives.

shown. These results were validated using the *RARB* MethyLight assay, in which the same six samples were shown to be methylated at similar levels (Figure 8D). These findings are in agreement with what has recently been reported for this locus in breast cancer (31,32).

None of the samples showed high-level methylation at the *CDHI* promoter. We found 11 to be methylated between 0.1% and 0.7% which could be detected with high reproducibility. Furthermore, we found 10 samples to be methylated in the interval from 0.01% to 0.1%, for which the reproducibility between samples was less good. These observed values might only account for a biologically insignificant background methylation level that can be found in normal cells (unpublished results). A recent study has found that a low background of *CDHI* methylation is present in normal breast tissue, and that this level did not differ significantly from what was found in adjacent malignant breast tissue (32). Another recent study reports that *CDHI* methylation was not found in a cohort of 28 tissue biopsies from 17 breast



**Figure 6.** Detection of false priming from a whole genome amplified template. We used an assay that selected poorly against unmodified templates. In this assay, five non-CpG cytosines and no CpG sites are found in between the primers. These non-CpG cytosines were converted to uracil in the bisulphite-modified template (red), but not in the unmodified template (blue). Thus, a significant right-shift of the melting profile of the unmodified amplicon is observed. (A) Real-time PCR amplification data. (B) First derivative melting peaks.

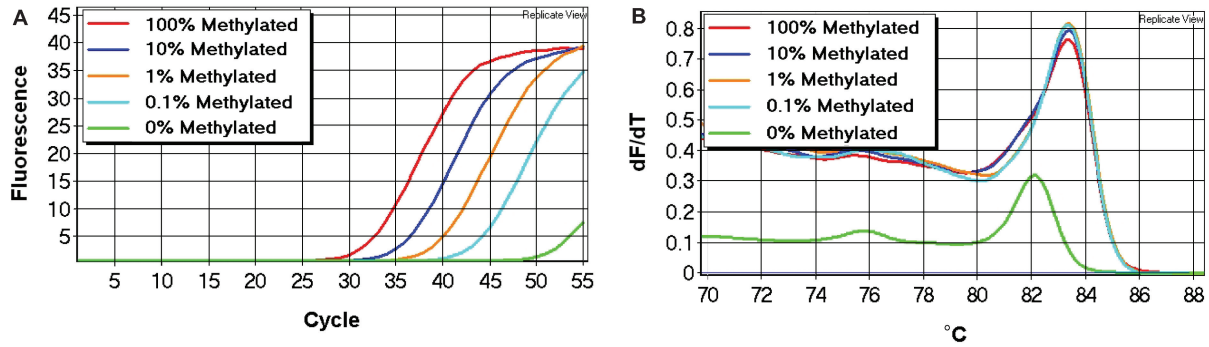
cancer patients (31). However, the method used in that study was not sensitive enough to detect methylation levels  $\sim 1\%$ . Thus, if *CDHI* methylation is detected using a purely qualitative and highly sensitive methodology, positive results might arise due to low background methylation.

We tested the same samples using our *CDHI* MethyLight assay with comparable results (data not shown). However, the *CDHI* MethyLight assay was not able to detect methylation in four of the samples showing the lowest levels of methylation in the *CDHI* SMART-MSP assay.

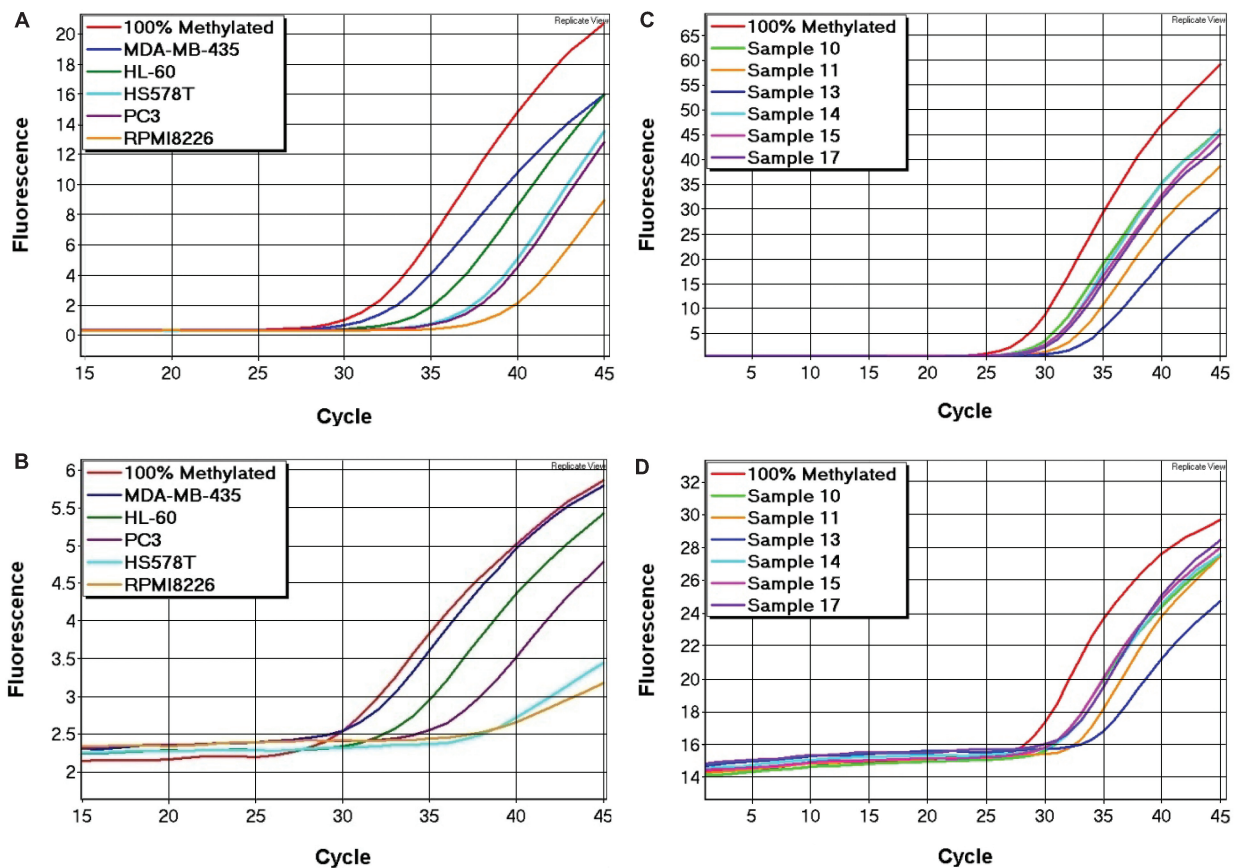
## DISCUSSION

MSP is a widely used method for the detection of DNA methylation. It uses primers specific for methylated (and optionally unmethylated), bisulphite-modified DNA (11). MSP is based on the principle that primers with mismatched 3'-ends will not be capable of extension during the PCR. If a band that corresponds to the amplicon size given by the MSP primers is seen on a gel after PCR, it is concluded that the sample is methylated. MSP is possibly





**Figure 7.** Identification of false positives in the *CDH1* SMART-MSP assay. The *CDH1* SMART-MSP assay was performed with an additional 10 cycles to obtain amplification from the unmethylated control (WGA product) shown in green. (A) Real-time PCR amplification data. (B) The melting peak of the fully unmethylated control was left-shifted by  $\sim 1.2^{\circ}\text{C}$  relative to melting peaks of the standards containing methylated template, and could thus be identified as a false-positive result.



**Figure 8.** Screening of cell lines for *CDH1* methylation and breast cancer samples for *RARB* methylation. (A) *CDH1* SMART-MSP amplification data for the positive cell lines. Five out of the 14 cell lines screened were shown to be methylated at the *CDH1* promoter. (B) *CDH1* MethyLight amplification data from the positive cell lines. The data from the MethyLight assay was consistent with the data from the SMART-MSP assay. (C) *RARB* SMART-MSP amplification data for the positive tumour samples. Six out of the 24 samples screened were shown to be methylated at the *RARB* promoter. (D) *RARB* MethyLight amplification data from the positive tumour samples. The data from the MethyLight assay was consistent with the data from the SMART-MSP assay.

the most sensitive non-quantitative technique available and can detect 0.1% methylation or less.

A major drawback of MSP is its susceptibility to false positives (12–14). This can be due to incomplete conversion of the template, false priming or a sensitivity issue due to the capacity of MSP to amplify very low-level methylation.

Incomplete bisulphite conversion is probably the most problematic cause of false-positive results. When performing MSP experiments, it is thus important to be confident that positive results are not derived from incomplete conversion. MSP primers are normally designed to have two or preferably more cytosines deriving from CpG sites at or near the 3'-end. This makes the primers highly

selective for methylated template. However, this also facilitates amplification of incomplete converted sequences in the bisulphite-treated DNA as unconverted sequence resembles methylated sequence. It is possible that only a small subset of the DNA copies suffer a substantially lower conversion rate, which in combination with the high sensitivity of MSP can lead to false positives or over-estimation of results. Also, it is possible that the distribution of unconverted sites is non-random, thus making some promoter regions more prone to incomplete conversion than others, and that conversion rates are dependent on DNA quality (16). Thus, in spite of stringent PCR conditions, a false-positive result can arise if bisulphite conversion is incomplete. For these reasons, it is recommended that a control for incomplete conversion is performed. This control should preferably assess the conversion status of non-CpG cytosines in the vicinity of the primer positions. We have shown that having a non-CpG cytosine at the 3'-end is not sufficient to rule out the possible amplification of incomplete converted DNA (Figures 5 and 6).

If the annealing temperature is too low or too many cycles are used, amplification can occur across the 3' mismatch. This type of false positive can be detected by the use of an appropriate negative control (e.g. WGA product).

Finally, the sensitivity of MSP might lead to false positives because of the amplification of a rare subpopulation of methylated sequences. The tumour sample might be extremely heterogeneous, with only a small proportion of methylated cells. Alternatively, the methylation might derive from normal cells in the tumour biopsy (12,33). In either case, it would be incorrect to call the tumour methylated for that particular gene. This problem arises because MSP is a non-quantitative methodology. Despite these limitations, MSP remains useful, particularly in preliminary screening of a large number of tumour specimens but may not be suitable in a clinical setting (7,34).

Here, we have shown that SMART-MSP can give accurate quantitative data for DNA methylation detection. The combination of MSP with HRM, which is enabled by the use of a HRM-compatible DNA double-stranded intercalating dye, enables the sensitive screening of the region in between the MSP primers. Thus, information is provided that cannot be obtained by electrophoresis. For full utility of the methodology, one or both of two types of primer positioning should be used: (i) only non-CpG cytosines between the primers allowing assessment if (low) levels of amplification are due to incomplete conversion and (ii) CpGs (with as few non-CpG cytosines as possible) between the primers allowing assessment if (low) levels of amplification are due to partial or heterogeneous methylation. Interpretation is made by considering both the quantification and the HRM information (Figure 1). When the melt profile of a true positive is established (Figure 2) there is no need for gel electrophoresis analysis or any further processing, and thus SMART-MSP is a closed-tube method.

HRM analysis can easily detect single base pair changes in the amplified DNA sequence. Thus, by including

non-CpG cytosines between the primers, the conversion status of these can be assessed. If cytosines in between the primers are not converted, the amplicons will melt late relative to amplicons derived from fully converted template (Figure 1). By generating incompletely converted DNA sequences, and using these as templates for our *CDKN2A* and *DAPK1* assays, we were able to show that amplification from these usually occurred, and were easily identified as they always corresponded to right-shifted melting peaks (Figure 5). In addition, we amplified unmodified DNA as well as modified DNA derived from the same individual using primers that select poorly between modified and unmodified DNA, and observed highly reproducible right-shifted melting peaks from the unmodified template relative to the modified one (Figure 6).

False-positive results due to false priming can be detected by HRM analysis as well, if CpGs are included in between the primers (Figure 1). By running the *CDHI* SMART-MSP assay for an additional 10 cycles, late amplification from the fully unmethylated control (WGA product) was seen. In this case, a left-shifted melting peak was observed due to the two CpGs found in between the primers being unmethylated. This allowed us to readily identify it as a false-positive result (Figure 7). However, sufficiently stringent PCR conditions and adequate primer design are the best insurance against false priming.

A left-shifted peak can also be due to the target sequence being heterogeneously methylated, which can result in heteroduplex formation, and thus the melting profile will often be visually different (Figure 1). The exact number of CpG sites that need to be methylated within MSP primers under given PCR conditions is hard to assess. This is especially important to keep in mind when heterogeneously methylated sequences are studied. Thus, methodologies that utilize MSP primers are only semi-quantitative when heterogeneously methylated DNA is amplified. For this reason, MSP might be less suited in those cases when CpG islands show highly variable methylation, as has been reported for the *p15INK4B* and *CX26* (connexin 26) genes (35–37). However, when including CpG sites in between the primers in the SMART-MSP methodology, it can be assessed whether the studied region is heterogeneously methylated or not, by the HRM analysis.

We were able to reliably detect the 0.1% methylated standard for each assay with high reproducibility using 25 ng of bisulphite-modified DNA as template (Figure 3). Amplification from the 0.01% methylated standard was occasionally observed in all SMART-MSP assays, but generally showed high run to run variations in  $C_T$  values. This might, in part, be caused by very low methylation levels present in normal blood. However, the quantitative accuracy in the range from 100% methylated template to 0.1% methylated template was not impaired by the fact that we did the dilutions in DNA from normal blood. During WGA of DNA all detectable methylation information is lost, and thus it is possible to create fully unmethylated template. However, results can be biased during normalization for DNA input if the dilutions are done using WGA product, since different genes are not

amplified in the exact same proportions. Nevertheless, WGA product is excellent as a negative control, especially when looking at low level methylation.

MSP was originally made quantitative by the use of TaqMan probes (19–21), but quantification without probes using the dye SYBR Green has been reported (38–41). SYBR Green intercalation into double-stranded DNA has been shown to be markedly influenced by salt concentration, by dye/base pair ratios which are not constant during the PCR since more and more double-stranded DNA is generated through each cycle, and to show sequence specific binding (42). For this reason, the number of PCR cycles can influence melting curve analysis (43). Generally, some of the problems associated with SYBR Green can be minimized if high dye/base pair ratios are used. However, SYBR Green cannot be used at saturating concentrations without inhibiting the PCR. These problems have been markedly reduced by the introduction of a new generation of dyes (22).

It has previously been shown that melting analysis can discriminate methylated from unmethylated DNA (44,45). These assays were based on methylation-independent PCR (MIP) primers, and have not become widely used, presumably because of the technical limitations of reagents, instrumentation and data analysis software used at that time. Generally, methods utilizing MIP primers can be compromised by the PCR bias phenomenon (46), but this is not an issue when MSP primers are used.

Melting curve analysis has also been used in combination with the MSP methodology as an alternative to gel electrophoresis (47). This methodology did not provide quantitative data or information that cannot be provided by gel electrophoresis. Melting analysis of MSP products in the presence of SYBR green have also been used to detect primer dimers (38). This can be done by gel electrophoresis as well. This study did provide quantitative data, but these were much less accurate compared to what we have obtained with a dye that does not inhibit PCR.

SMART-MSP is complementary to our previously described methodology using HRM, methylation-sensitive HRM (MS-HRM) (48). SMART-MSP uses MSP primers and quantification is based on  $C_T$  values instead of melting curve comparisons. Also SMART-MSP can detect the amplification of incompletely converted DNA, and is generally more sensitive. However, the main advantage of SMART-MSP might be that each assay is performed at one annealing temperature; where as in MS-HRM, a range of different temperatures are needed for the sensitive screening of samples showing markedly different methylation levels. In MS-HRM, quantification is based on comparisons with melting profiles of a standard dilution series that needs to be included in every run. This is not necessary when performing SMART-MSP assays which quantify relative to a 100% methylated control and the amplification of a CpG-free control sequence. We are currently using MS-HRM to analyse samples where relatively high levels of methylation are expected whereas SMART-MSP comes into its own to detect low levels of methylation.

Compared to the MethyLight technology, SMART-MSP does not require expensive probes. However, quantification without probes is compromised by primer dimers and non-specific amplification (38). For this reason, there is a need for evaluation of the PCR product, which can be conveniently done with HRM analysis. We observed non-specific amplification from some of our controls when the assays were performed at lower annealing temperatures. These products melted differently, and could be identified as non-specific amplification using gel electrophoresis as well (data not shown). However, when the assays were performed at the optimized annealing temperature, no primer dimers or non-specific products were observed. Without probes, less optimization may be needed and assay design has become easier. The use of HRM can give information about the methylation status of CpGs between the primers, but most importantly, the HRM step can be used as a control to indicate amplification of incompletely modified sequences, false priming or non-specific products. Thus, SMART-MSP is less prone to false-positive results and over-estimation of methylation levels. We have shown that the sensitivity of our assays is similar to what has been reported for MethyLight.

In conclusion, SMART-MSP has made quantitative MSP inexpensive, more accurate, and less prone to false positives. It is a closed-tube method based on a high-throughput methodology, and thus it might prove to be the method of choice for the assessment of DNA methylation in clinical samples, particularly when low levels of methylation need to be sensitively and accurately determined.

## ACKNOWLEDGEMENTS

We acknowledge Chelsea Hewitt and Angela Tan for critically reading this manuscript, and Stephen Fox and David Westerman for their continued support. This work was funded by grants from the United States Department of Defense Breast Cancer Research Program (BC046207) and the National Health and the Medical Research Council of Australia (350452) to A.D. Funding to pay the Open Access publication charges for this article was provided by Department of Defense (US) Breast Cancer Research Program.

*Conflict of interest statement.* A provisional patent has been filed for this methodology by the Peter MacCallum Cancer Centre.

## REFERENCES

1. Gardiner-Garden, M. and Frommer, M. (1987) CpG islands in vertebrate genomes. *J. Mol. Biol.*, **196**, 261–282.
2. Esteller, M. (2005) Aberrant DNA methylation as a cancer-inducing mechanism. *Annu. Rev. Pharmacol. Toxicol.*, **45**, 629–656.
3. Herman, J.G. and Baylin, S.B. (2003) Gene silencing in cancer in association with promoter hypermethylation. *N. Engl. J. Med.*, **349**, 2042–2054.
4. Laird, P.W. (2003) The power and the promise of DNA methylation markers. *Nat. Rev. Cancer*, **3**, 253–266.



5. Shi, H., Wang, M.X. and Caldwell, C.W. (2007) CpG islands: their potential as biomarkers for cancer. *Expert Rev. Mol. Diagn.*, **7**, 519–531.
6. Toyota, M. and Issa, J.P. (2005) Epigenetic changes in solid and hematopoietic tumors. *Semin. Oncol.*, **32**, 521–530.
7. Cottrell, S.E. and Laird, P.W. (2003) Sensitive detection of DNA methylation. *Ann. NY Acad. Sci.*, **983**, 120–130.
8. Palmisano, W.A., Divine, K.K., Saccomanno, G., Gilliland, F.D., Baylin, S.B., Herman, J.G. and Belinsky, S.A. (2000) Predicting lung cancer by detecting aberrant promoter methylation in sputum. *Cancer Res.*, **60**, 5954–5958.
9. Chan, K.C. and Lo, Y.M. (2007) Circulating tumour-derived nucleic acids in cancer patients: potential applications as tumour markers. *Br. J. Cancer*, **96**, 681–685.
10. Taback, B. and Hoon, D.S. (2004) Circulating nucleic acids and proteomics of plasma/serum: clinical utility. *Ann. NY Acad. Sci.*, **1022**, 1–8.
11. Herman, J.G., Graff, J.R., Myohanen, S., Nelkin, B.D. and Baylin, S.B. (1996) Methylation-specific PCR: a novel PCR assay for methylation status of CpG islands. *Proc. Natl Acad. Sci. USA*, **93**, 9821–9826.
12. Aggerholm, A. and Hokland, P. (2000) DAP-kinase CpG island methylation in acute myeloid leukemia: methodology versus biology? *Blood*, **95**, 2997–2999.
13. Dobrovic, A. (2005) In Coleman, W.B. and Tsongalis, G.J. (eds), *Molecular diagnostics for the clinical laboratorian*, 2nd edn. Humana Press, Totowa, NJ, pp. 149–160.
14. Rand, K., Qu, W., Ho, T., Clark, S.J. and Molloy, P. (2002) Conversion-specific detection of DNA methylation using real-time polymerase chain reaction (ConLight-MSP) to avoid false positives. *Methods*, **27**, 114–120.
15. Taylor, K.H., Kramer, R.S., Davis, J.W., Guo, J., Duff, D.J., Xu, D., Caldwell, C.W. and Shi, H. (2007) Ultradeep bisulfite sequencing analysis of DNA methylation patterns in multiple gene promoters by 454 sequencing. *Cancer Res.*, **67**, 8511–8518.
16. Warnecke, P.M., Stirzaker, C., Song, J., Grunau, C., Melki, J.R. and Clark, S.J. (2002) Identification and resolution of artifacts in bisulfite sequencing. *Methods*, **27**, 101–107.
17. Ehrlich, M., Zoll, S., Sur, S. and van den Boom, D. (2007) A new method for accurate assessment of DNA quality after bisulfite treatment. *Nucleic Acids Res.*, **35**, e29.
18. Sasaki, M., Anast, J., Bassett, W., Kawakami, T., Sakuragi, N. and Dahiya, R. (2003) Bisulfite conversion-specific and methylation-specific PCR: a sensitive technique for accurate evaluation of CpG methylation. *Biochem. Biophys. Res. Commun.*, **309**, 305–309.
19. Eads, C.A., Danenberg, K.D., Kawakami, K., Saltz, L.B., Blake, C., Shibata, D., Danenberg, P.V. and Laird, P.W. (2000) MethyLight: a high-throughput assay to measure DNA methylation. *Nucleic Acids Res.*, **28**, E32.
20. Lo, Y.M., Wong, I.H., Zhang, J., Tein, M.S., Ng, M.H. and Hjelm, N.M. (1999) Quantitative analysis of aberrant p16 methylation using real-time quantitative methylation-specific polymerase chain reaction. *Cancer Res.*, **59**, 3899–3903.
21. Eads, C.A., Danenberg, K.D., Kawakami, K., Saltz, L.B., Danenberg, P.V. and Laird, P.W. (1999) CpG island hypermethylation in human colorectal tumors is not associated with DNA methyltransferase overexpression. *Cancer Res.*, **59**, 2302–2306.
22. Gudnason, H., Dufva, M., Bang, D.D. and Wolff, A. (2007) Comparison of multiple DNA dyes for real-time PCR: effects of dye concentration and sequence composition on DNA amplification and melting temperature. *Nucleic Acids Res.*, **35**, e127.
23. Miller, S.A., Dykes, D.D. and Polesky, H.F. (1988) A simple salting out procedure for extracting DNA from human nucleated cells. *Nucleic Acids Res.*, **16**, 1215.
24. Umetani, N., de Maat, M.F., Mori, T., Takeuchi, H. and Hoon, D.S. (2005) Synthesis of universal unmethylated control DNA by nested whole genome amplification with phi29 DNA polymerase. *Biochem. Biophys. Res. Commun.*, **329**, 219–223.
25. Steger, G. (1994) Thermal denaturation of double-stranded nucleic acids: prediction of temperatures critical for gradient gel electrophoresis and polymerase chain reaction. *Nucleic Acids Res.*, **22**, 2760–2768.
26. Livak, K.J. and Schmittgen, T.D. (2001) Analysis of relative gene expression data using real-time quantitative PCR and the 2<sup>-</sup>(Delta Delta C(T)) Method. *Methods*, **25**, 402–408.
27. Ogino, S., Kawasaki, T., Brahmandam, M., Cantor, M., Kirkner, G.J., Spiegelman, D., Makrigiorgos, G.M., Weisenberger, D.J., Laird, P.W., Loda, M. *et al.* (2006) Precision and performance characteristics of bisulfite conversion and real-time PCR (MethylLight) for quantitative DNA methylation analysis. *J. Mol. Diagn.*, **8**, 209–217.
28. Paz, M.F., Fraga, M.F., Avila, S., Guo, M., Pollan, M., Herman, J.G. and Esteller, M. (2003) A systematic profile of DNA methylation in human cancer cell lines. *Cancer Res.*, **63**, 1114–1121.
29. Reinhold, W.C., Reimers, M.A., Maunakea, A.K., Kim, S., Lababidi, S., Scherf, U., Shankavaram, U.T., Ziegler, M.S., Stewart, C., Kouros-Mehr, H. *et al.* (2007) Detailed DNA methylation profiles of the E-cadherin promoter in the NCI-60 cancer cells. *Mol. Cancer Ther.*, **6**, 391–403.
30. Wong, I.H., Ng, M.H., Lee, J.C., Lo, K.W., Chung, Y.F. and Huang, D.P. (1998) Transcriptional silencing of the p16 gene in human myeloma-derived cell lines by hypermethylation. *Br. J. Haematol.*, **103**, 168–175.
31. Dahl, C. and Guldborg, P. (2007) A ligation assay for multiplex analysis of CpG methylation using bisulfite-treated DNA. *Nucleic Acids Res.*, **35**, e144.
32. Feng, W., Shen, L., Wen, S., Rosen, D.G., Jelinek, J., Hu, X., Huan, S., Huang, M., Liu, J., Sahin, A.A. *et al.* (2007) Correlation between CpG methylation profiles and hormone receptor status in breast cancers. *Breast Cancer Res.*, **9**, R57.
33. Aggerholm, A., Guldborg, P., Hokland, M. and Hokland, P. (1999) Extensive intra- and interindividual heterogeneity of p15INK4B methylation in acute myeloid leukemia. *Cancer Res.*, **59**, 436–441.
34. Mikeska, T., Bock, C., El-Maarri, O., Hubner, A., Ehrentraut, D., Schramm, J., Felsberg, J., Kahl, P., Buttner, R., Pietsch, T. *et al.* (2007) Optimization of quantitative MGMT promoter methylation analysis using pyrosequencing and combined bisulfite restriction analysis. *J. Mol. Diagn.*, **9**, 368–381.
35. Dodge, J.E., List, A.F. and Futscher, B.W. (1998) Selective variegated methylation of the p15 CpG island in acute myeloid leukemia. *Int. J. Cancer*, **78**, 561–567.
36. Tan, L.W., Bianco, T. and Dobrovic, A. (2002) Variable promoter region CpG island methylation of the putative tumor suppressor gene Connexin 26 in breast cancer. *Carcinogenesis*, **23**, 231–236.
37. Cameron, E.E., Baylin, S.B. and Herman, J.G. (1999) p15(INK4B) CpG island methylation in primary acute leukemia is heterogeneous and suggests density as a critical factor for transcriptional silencing. *Blood*, **94**, 2445–2451.
38. Chan, M.W., Chu, E.S., To, K.F. and Leung, W.K. (2004) Quantitative detection of methylated SOCS-1, a tumor suppressor gene, by a modified protocol of quantitative real time methylation-specific PCR using SYBR green and its use in early gastric cancer detection. *Biotechnol. Lett.*, **26**, 1289–1293.
39. Chu, D.C., Chuang, C.K., Fu, J.B., Huang, H.S., Tseng, C.P. and Sun, C.F. (2002) The use of real-time quantitative polymerase chain reaction to detect hypermethylation of the CpG islands in the promoter region flanking the GSTP1 gene to diagnose prostate carcinoma. *J. Urol.*, **167**, 1854–1858.
40. Hong, Y.S., Roh, M.S., Kim, N.Y., Lee, H.J., Kim, H.K., Lee, K.E., Kwak, J.Y. and Kim, J.Y. (2007) Hypermethylation of p16INK4a in Korean non-small cell lung cancer patients. *J. Korean Med. Sci.*, **22** (Suppl), S32–S37.
41. Thomassin, H., Kress, C. and Grange, T. (2004) MethylQuant: a sensitive method for quantifying methylation of specific cytosines within the genome. *Nucleic Acids Res.*, **32**, e168.
42. Zipper, H., Brunner, H., Bernhagen, J. and Vitzthum, F. (2004) Investigations on DNA intercalation and surface binding by SYBR Green I, its structure determination and methodological implications. *Nucleic Acids Res.*, **32**, e103.
43. Giglio, S., Monis, P.T. and Saint, C.P. (2003) Demonstration of preferential binding of SYBR Green I to specific DNA fragments in real-time multiplex PCR. *Nucleic Acids Res.*, **31**, e136.
44. Guldborg, P., Worm, J. and Gronbaek, K. (2002) Profiling DNA methylation by melting analysis. *Methods*, **27**, 121–127.



45. Worm, J., Aggerholm, A. and Guldberg, P. (2001) In-tube DNA methylation profiling by fluorescence melting curve analysis. *Clin. Chem.*, **47**, 1183–1189.
46. Warnecke, P.M., Stirzaker, C., Melki, J.R., Millar, D.S., Paul, C.L. and Clark, S.J. (1997) Detection and measurement of PCR bias in quantitative methylation analysis of bisulphite-treated DNA. *Nucleic Acids Res.*, **25**, 4422–4426.
47. Akey, D.T., Akey, J.M., Zhang, K. and Jin, L. (2002) Assaying DNA methylation based on high-throughput melting curve approaches. *Genomics*, **80**, 376–384.
48. Wojdacz, T.K. and Dobrovic, A. (2007) Methylation-sensitive high resolution melting (MS-HRM): a new approach for sensitive and high-throughput assessment of methylation. *Nucleic Acids Res.*, **35**, e41.